

Split Core Current Transformer

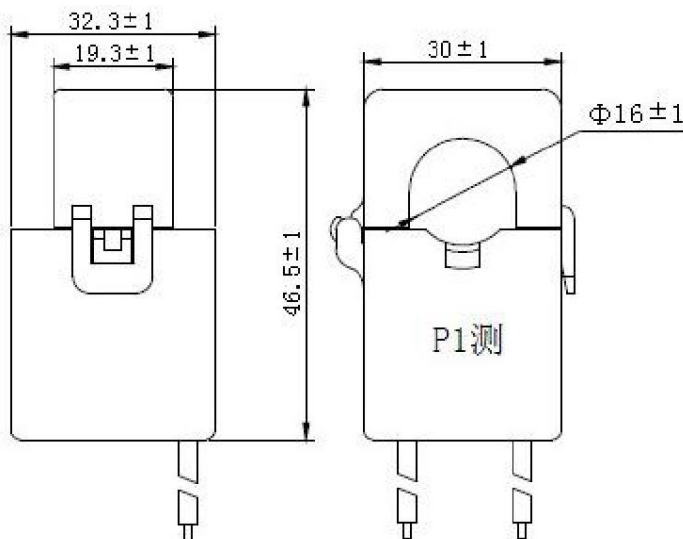
The SDK16 Series are split-core current transformers. The CT can be mounted to existing panels, such as control centers or load centers, to measure or monitor wattage. These CTs can be mounted without removing existing cables for easier installation



Electrical Specifications

MODEL	INPUT CURRENT	AVAILABLE OUTPUT
SDK16-010	10A	CURRENT OUTPUTS@ 20mA, 33.3mA, 40mA, 50mA, 100mA, 1A VOLTAGE OUTPUTS@ 0.25V, 0.33V, 0.5V, 1V, 2V
SDK16-100	40A	
SDK16-101	60A	
SDK16-102	80A	
SDK16-103	100A	
SDK16-104	120A	
SDK16-105	150A	

Mechanical Dimensions in mm



APPLICATIONS

- Energy and sub-metering products
- Electrical load monitoring
- Network equipment
- Instruments and sensors
- Control systems
- Go GREEN initiatives

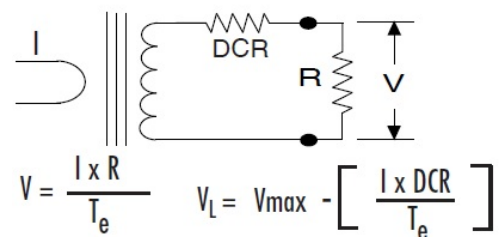
FEATURES

- 0.63" window opening (ID)
- Custom design Turns-Ratio available
- Rigid housing case with UL 94V-0 durable plastic
- 6ft black/white PVC wire leads—24~18AWG
- Approximate weight 100g

SPECIFICATIONS

- Standard Input Current 0.1-150A
- Frequency 50Hz — 400Hz
- Standard accuracy 0.2, 0.5, 1
- Insulation Voltage 4000 VAC/1min
- Operating Temp. -40°C to +70°C
- Storage Temp. -45°C to +85 °C
- ANSI C57.13 and IEC60044-1 Standards

Mechanical Dimensions in mm



CAUTION

Before installation, safety precautions must be followed by licensed professional. Never energize primary unless short circuited terminals or burden connected to secondary.